

Radio Manager Database Maintenance

Overview

Radio Manager 2 provides simultaneous programming of multiple radios, enabling efficient configuration and software updates of the radio fleet. Its database-driven system tracks and manages an organisation's TETRA terminals, providing rich asset management capability and comprehensive reporting capabilities for reviewing and auditing.

Database maintenance is an activity designed to keep a database clean, well-organised and running smoothly. This guide describes the most frequently asked questions about the Radio Manager database, including the importance of database maintenance to ensure the reliability and high-performance quality of Radio Manager.

What database does Radio Manager use?

Radio Manager 2 uses a Microsoft SQL Server database.

Where are my database maintenance tools?

You can use the separate Radio Manager Database Controller to carry out database maintenance tasks. For further information on how to run and use this, see "The Radio Manager Database Controller" within the Radio Manager user guide.

Can I use my normal database tools?

Once you have prepared the Radio Manager database, you can use general-purpose SQL Server tools to backup and restore the database. See "Using general-purpose SQL Server database management tools" within the Radio Manager user guide for further details.

Does Sepura supply any other database tools I can use?

You can use a command-line utility to back up the Radio Manager database. Further information on this can be found in the "Command-line backup" section of the Radio Manager user guide.

What other options are there for database management?

Once you have prepared the Radio Manager database, you can use general-purpose SQL Server tools to backup and restore the database – see sections Using general-purpose SQL Server database management tools of the Radio Manager user guide for details.

Maintaining Your Database

It is important to monitor and control the status of the database using the Radio Manager Database Controller to ensure the reliability and high-performance quality of Radio Manager. The following best practices have been published by the Support Desk to support users with this.



RM Database Controller
App

How do I archive my data?

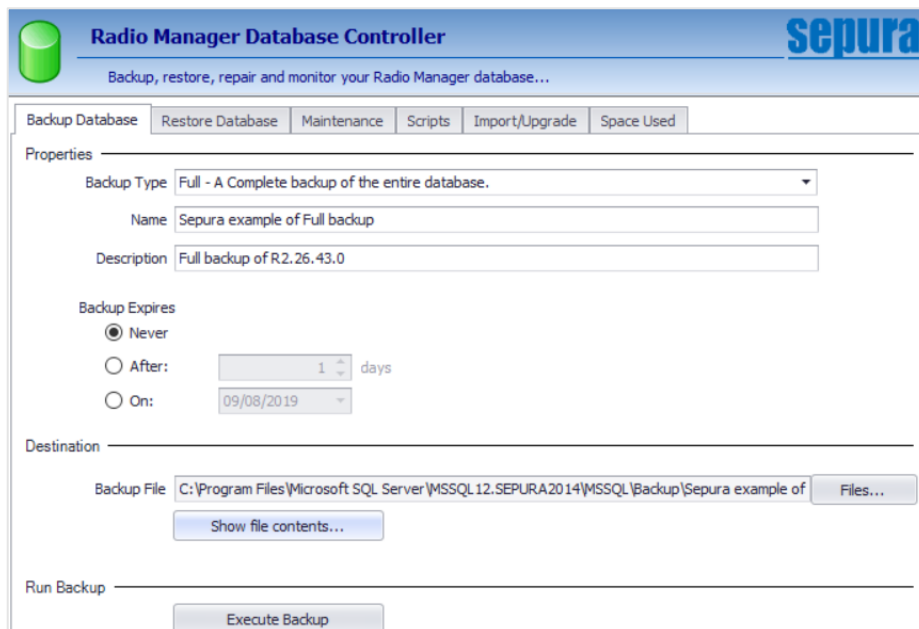
You can back up the Radio Manager database using the Radio Manager Database Controller (shown below) or a general-purpose SQL server database management tool. See sections "Creating backups", "Command-line backup" and "Using general-purpose SQL Server database management tools", respectively, from the Radio Manager user guide for further information.

How do I backup my database?

Regularly backing up your database will allow you to access a previous working database if something goes wrong with the current version. The full database can be backed-up by following the steps outlined below:

1. Go to the “Backup Database” tab in the Radio Manager Database Controller,
2. Select Properties > Backup Type > Full and enter:
 - a. Name,
 - b. Description,
 - c. Backup expires > Never.
3. Set the destination to a new file in C:\Program Files\Microsoft SQL Server\MSSQL12.SEPURA2014\MSSQL\Backup, with the same name used above,
4. Select Run Backup > Execute Backup.

If you have any questions regarding database back-ups, or if you encounter any problems during the backup process, please contact [Customer Support](#).



The screenshot shows the 'Radio Manager Database Controller' window with the 'Backup Database' tab selected. The interface includes a header with the Sepura logo and a subtitle 'Backup, restore, repair and monitor your Radio Manager database...'. Below the header are several tabs: 'Backup Database', 'Restore Database', 'Maintenance', 'Scripts', 'Import/Upgrade', and 'Space Used'. The 'Properties' section is expanded, showing 'Backup Type' set to 'Full - A Complete backup of the entire database.' with a dropdown arrow. Below this are text fields for 'Name' (containing 'Sepura example of Full backup') and 'Description' (containing 'Full backup of R2.26.43.0'). The 'Backup Expires' section has three radio buttons: 'Never' (selected), 'After: 1 days', and 'On: 09/08/2019'. The 'Destination' section shows a 'Backup File' path: 'C:\Program Files\Microsoft SQL Server\MSSQL12.SEPURA2014\MSSQL\Backup\Sepura example of', followed by a 'Files...' button and a 'Show file contents...' button. At the bottom, there is a 'Run Backup' section with an 'Execute Backup' button.

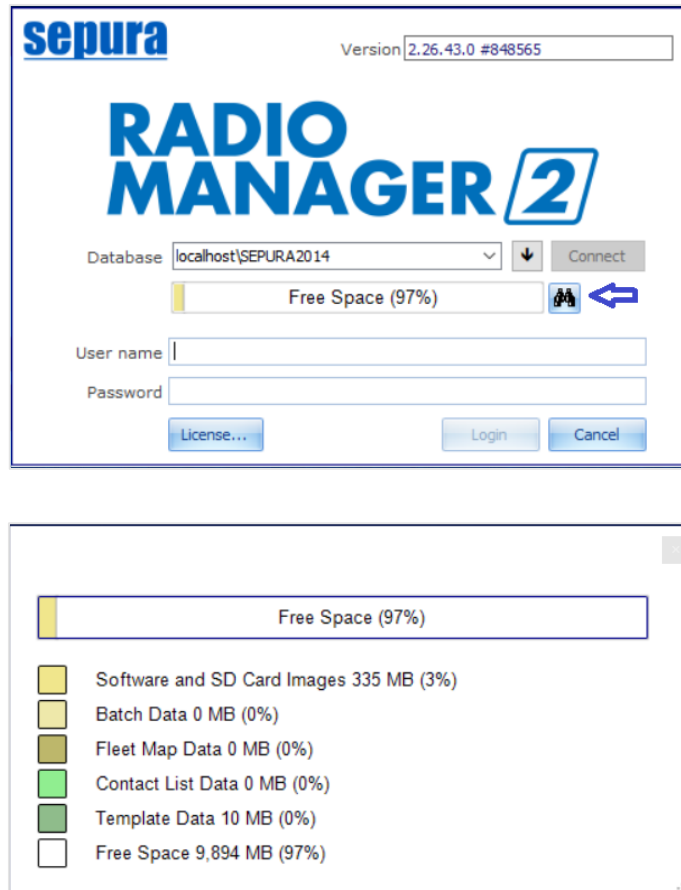
How do I restore my data?

Depending on how you have backed up your database, you can use the Radio Manager Database Controller or a general-purpose SQL server database management tool to restore your data. See sections “Creating backups”, “Command-line backup” and “Using general-purpose SQL Server database management tools”, respectively, from the Radio Manager user guide for further information.

How can I check free space in my database?

It is important to ensure that the database has enough free space for its tools to carry out the required maintenance tasks; these tools need space themselves to work. There should be more than 30% free space in the database to allow for this.

The amount of free space in the database can be checked on the Sepura login window for the Radio Manager 2 GUI and the Radio Manager Database Controller. By clicking on the binoculars icon, the user can see how the data is distributed in the current database.



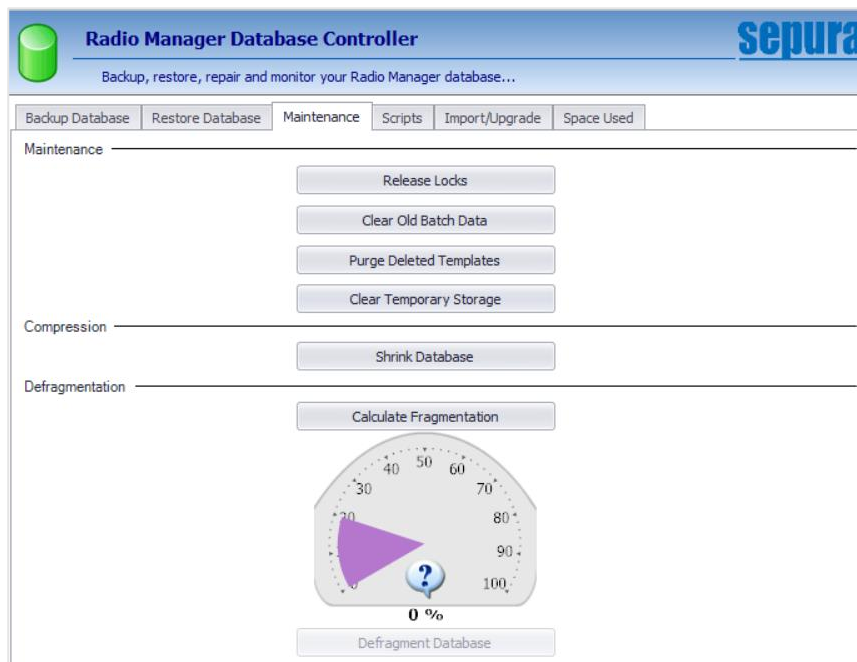
Users can follow the steps outlined below to help reduce the amount of space in use.

How do I clear unwanted data?

The performance quality of Radio Manager 2 is linked to the amount of free space available in the database. We recommend periodically clearing any obsolete and unwanted data from the database to help to keep Radio Manager running smoothly. To do this, users can:

1. Export an RMT file of templates that are unused, but may be required in the future,
2. Delete any unwanted templates*,
3. Apply the maintenance tools in the Radio Manager Database Controller:
 - a) Clear Old Batch Data,
 - b) Purge Deleted Templates,
 - c) Shrink Database.

*Please note that Network templates should always be checked for TEI ISSI assignments prior to deletion.



Can I force-close Radio Manager 2?

We strongly advise that users avoid forcing the close of Radio Manager 2 (e.g. by using "Ctrl+Alt+Delete" to shut down the application). If Radio Manager 2 is force-closed, the database could become corrupted.

Abrupt system shutdowns should also be avoided for this same reason.

How do I run scripts supplied by Sepura?

Users can run scripts from the Radio Manager Database Controller to correct, enhance or investigate the current operation of your database. See "How do I run scripts supplied by Sepura?" within the Radio Manager user guide for further details.

References: [MOD-09-1006](#), [MOD-11-1323](#), [MOD-11-1337](#)